



GY MARINE SERVICES L.L.C
جي واي للخدمات البحرية ش.م.م

 **CXO300**
diesel v8

**GO FURTHER.
GO FASTER.
GO DIESEL.**

Built for purpose

CXO300 - 300hp
diesel outboard



CXO300
Overview

**Introducing the CXO300
diesel outboard
- exceptional
performance with
the reassurance of
proven V8 diesel
technology**



CXO300 - 300hp
diesel outboard



25% LESS FUEL



300HP



480FT.LB TORQUE



V8 ENGINE



3x LONGER LIFE



COMMERCIALY RATED

CXO300
Company snapshot



CXO300 - 300hp
diesel outboard

COX POWERTRAIN



£100m
investment



53 expert
engineers



Privately
owned



Founded
in 2007



Located in the
United Kingdom



Cox representation
in 100 countries

CXO300

A story of British innovation

1990s

HOW IT ALL BEGAN

Charles Good starts searching for a lightweight diesel engine design capable of satisfying the large global demand for a diesel outboard engine which he had indentified.

2008

VISION TURNED INTO REALITY

Charles meets David Cox and agres to become Executive Chairman and with his investor group become the financier of Cox Powertrain to develop David's lightweight diesel engine design.

2010

FIRST FIRE

The first fire of Cox's concept engine and commencement of design for the Alpha engine.

2013

ALPHA ENGINE

Alpha engine on-water demonstrations begins and a more defined beta design was developed.

CXO300 - 300hp
diesel outboard



GY MARINE SERVICES L.L.C
جي واي للخدمات البحرية ش.ذ.م.م

2014

EXPANDING MANAGEMENT

Following an extensive two year search for world class technical leadership to accelerate the business, Charless Good hires Tim Routsis as CEO of Cox Powertrain.

2016

DISTRIBUTION NETWORK

Work to secure a global distributor network commences with an expected 50 distributors worldwide to support the CXO300.

2018

COUNTDOWN TO LAUNCH

The CXO300 worldwide demonstration programmes begin along with landmark validation programmes from key marine influencers. The CXO300 global launch is planned for November 2018.

2020

PRODUCTION BEGINS

Emissions certification approval obtained for EPA Tier 3, RCD II and IMO II. Production of the CXO300 commenced with the first units shipped to the marketing in July 2020.



CXO300
Diesel reliability

**BUILT FOR PURPOSE.
BUILT TO PERFORM.
BUILT TO LAST.**

CXO300 - 300hp
diesel outboard



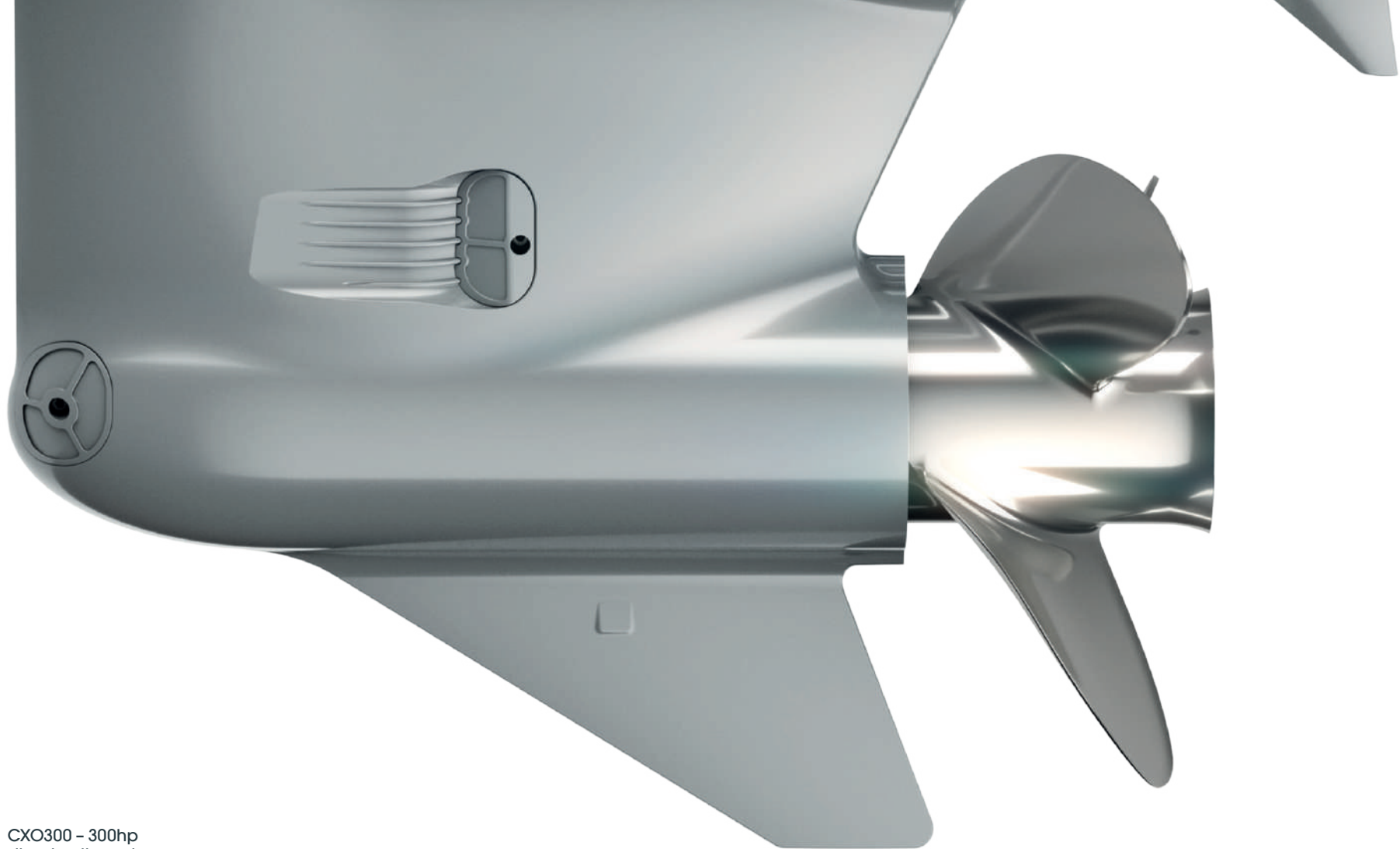


GY MARINE SERVICES L.L.C
جي واي للخدمات البحرية ش.ذ.م.م

At Cox headquarters in Shoreham, UK we have built a £6.7m, highly advanced and incredibly sophisticated production plant. Designed with a 'no-fault-forward' concept in mind, and with intelligent computer systems fitted throughout, there is no room for assembly error. Each component of the outboard is fully traceable and continual checks are carried out at each stage to ensure that everything is correct prior to the assembly being able to move on to the next workstation. This kind of production line is unusual to see in the marine industry and far more common in the automotive sector, which gives an indication as to how intelligent the line is.

To further assist in ensuring that every outboard that leaves our facility is without fault, we have a series of testing cells, which feature water tanks for the outboard to be submerged in, and dynamo meters for measuring the torque and the power in different controlled conditions, with varying loads. Vital data and findings are collected during these tests and sent to our engineering team for analysis to improve, monitor and solve.

Built with flexibility and scalability in mind, this production facility has the ability to adapt to ensure we are able to meet the growing demands of the marine industry.



CXO300 - 300hp
diesel outboard

RETROFIT COMPATIBILITY

Although unique in design, the CXO300 has been built for purpose and developed according to existing industry standards – making it as easy to install on a wide range of vessels as any gasoline outboard.



DIESEL

Standard pump diesel.



NMEA

NMEA 2000 compatible.



TRANSOM

Standard outboard fitting layout.
6-bolt mounting with multi-hole adjustment.




PROP

Off the shelf.
Maximum propeller diameter 16".
1.25" shaft / 19 tooth.



STEERING

Compatible with all Seastar EPS steering.



CXO300
Setting a new
benchmark

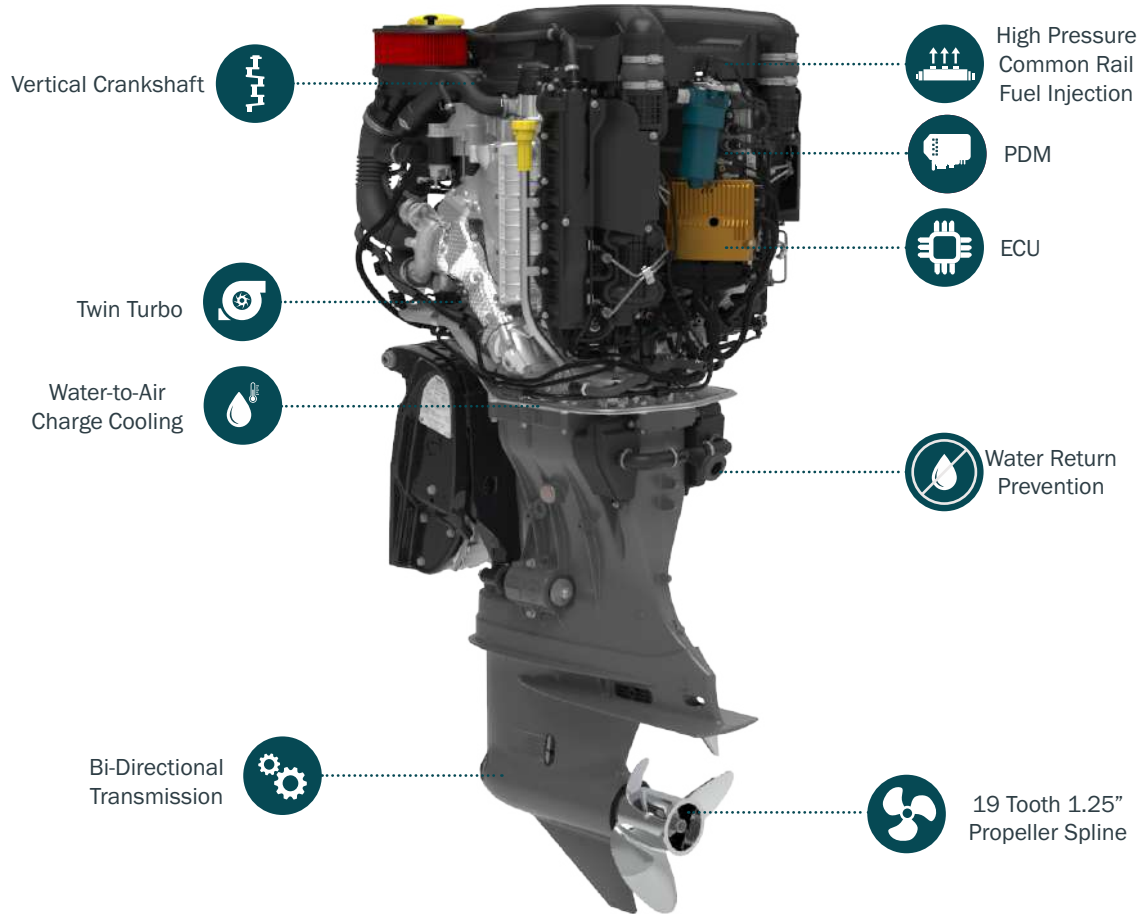
REDEFINING THE STANDARDS IN SERVICE

When purchasing a Cox diesel outboard you are buying more than an engine, you are acquiring a new level of service and care that comes standard with all our products. We have defined service standards to ensure you don't lose a week's worth of revenue, or that fishing weekend you have been planning for weeks, because your engine is down.

As a result Cox customers will be able to raise a claim through a push of a button and be assigned a case manager whose sole purpose is to manage the case

every step of the way and get your engine up running as quickly as possible. The Cox after sales team will have real time visibility of each and every case to ensure our service standards are being met by our dealer network wherever you are in the world. We offer an engine substitution programs for those customers who cannot afford down time and a true 24/7 customer service to ensure there is always somebody available to attend our customers no matter the time of day, or night.

CXO300 - 300hp
diesel outboard



WORLDWIDE DISTRIBUTION NETWORK



100 Countries Covered



35 Distributors



400 Dealers

Cox has worked tirelessly to establish the best possible team of exclusive distributors, covering 100 countries across the globe.

Each has been selected for its reputable standing within the marine industry, both for professional and recreational users. These will be joined by an expansive network of over 400 dealers worldwide who, like the distributors, will be on hand to ensure the highest levels of customer service.

Visit www.coxmarine.com/distributors to find out more about your local distributor.



GY MARINE SERVICES L.L.C
جي واي للخدمات البحرية ش.ذ.م.م



COX POWERTRAIN LIMITED

Al- Jaddaf DY 98 Shed B, Dubai-UAE

info@gy-ms.com

www.gy-ms.com

+971 569983359

 [@gymarine.services](https://www.instagram.com/gymarine.services)

 [GY Marine Services L.L.C](https://www.linkedin.com/company/gy-marine-services-l-l-c)

